

# 6MP Ceiling Camera

All Inclusive • Moonlight Technology Made In Germany



Security-Vision-Systems



p25: In-ceiling 6MP IP camera Ø 105 mm  
Lens options 180° hemispheric to 160 mm (35 mm eq.)

MOBOTIX Management Center included: VMS for Mac/Windows • no costs • no camera limits



**6MP Camera p25 incl. VMS for €448\***



Night image 0.7 lux @ 1/60 s



**Standalone** Full functionality @ zero bandwidth



**Video Sensor** MxActivitySensor reducing false alarms



**Event Recording** Onboard (SD card) & direct to NAS



**MxAnalytics** Heat map & people counting



**Alarm Notification** E-mail, FTP & VoIP (SIP)



**Communication** Two-way audio option



**Power** Standard PoE below 4W

\* Sold only to distributors or commercial clients • Prices excluding VAT/sales tax • Manufacturer's recommended retail price ex-works Langmeil, Germany • MOBOTIX, the MX Logo, MxControlCenter, MxEasy, MxPEG and MxActivitySensor are trademarks of MOBOTIX AG registered in the European Union, the U.S.A. and in other countries • Subject to change without notice • MOBOTIX do not assume any liability for technical or editorial errors or omissions contained herein • All rights reserved.

p25 Ceiling



i25 Wall



c25 Ceiling

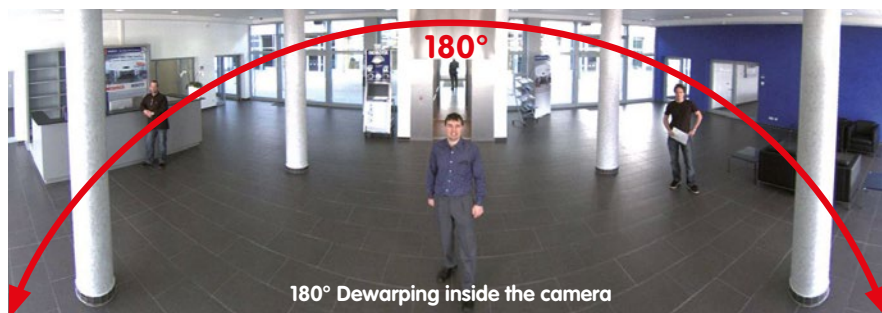


S15 Flexible



M15 Thermal





## Hemispheric Included

The new indoor camera products are especially designed to be very competitive and at the same time supporting all MOBOTIX features and functionalities. Due to short distances in indoor environments, the new indoor camera line is perfect for the MOBOTIX hemispheric technology to achieve 360-degree view without any blind spots. MOBOTIX was pioneering this technology in 2007 with the launch of the MOBOTIX Q22 camera, supporting six display modes with quality dewarping inside the camera to achieve best image quality without any bandwidth.

## i25 – Wall

The i25 hemispheric model will be wall mounted with a tilt angle of 15 degree to achieve a perfect panoramic overview of a room. If mounted above the door, the i25 looks even partially underneath or into the door. A 90° model is available too.

## c25 – Ceiling

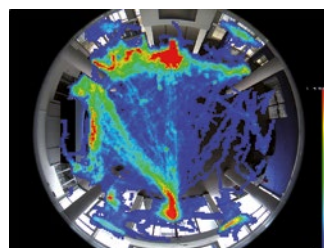
The c25 is the smallest hemispheric model and comes with three clamps like a halogen downlight to support easiest installations, perfect for suspended ceilings. An extra corner mount is available for smooth installations.

## p25 – PT Ceiling

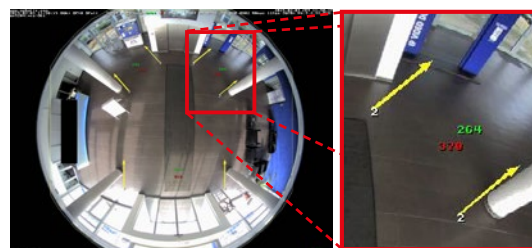
The p25 is a ceiling camera with a manual pan/tilt functionality, using the same diameter and clamps like the c25 for easiest installations. Equipped with a telephoto lens, the p25 can be directed to a specific spot in the room, with a 90-degree lens and mounted in the corner of a room the p25 covers the entire room in 6MP resolution. A hemispheric version is available too. For all three indoor models, there will be a surface mount kit to cope with concrete ceilings.

## MxAnalytics 100% Included

MxAnalytics supports people counting and heat map reporting without any PCs inside the camera. This functionality is part of the camera itself with no extra costs and therefore avoids any bandwidth traffic. It is perfect for indoor locations like retail stores, museums, shops, health care centers, universities and schools.



MxAnalytics heat map

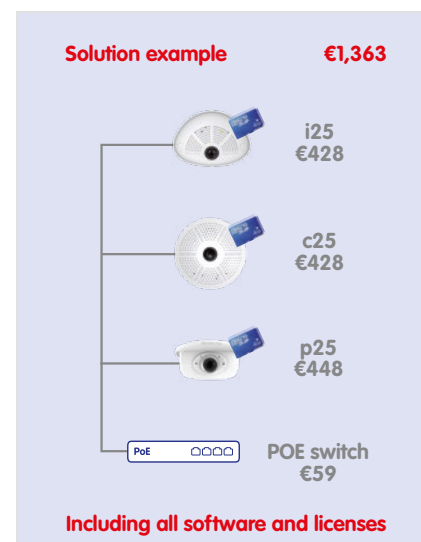


MxAnalytics people counting

Counting corridor

## Optional Accessories

With the optional MxBus IO Module all three cameras can manage two input lines, two 12 V outputs and the connection to other MxBus devices via MxBus interface. The input lines are isolated and do not require any power supply to monitor a chain of door or window contacts over several hundred meters. The outputs can directly drive a relay to switch high power AC loads like lamps or motors. The MxBus is a two-wire encrypted IO-Bus developed by MOBOTIX and allows an easy and secure interface to several different IO-Boxes over 100 meters. All models support two-way audio with an optional audio package incl. microphone and speaker.



p25 On-Wall Kit



i25 On-Wall Kit



c25 On-Wall Kit



c25 Corner Mount



p25 Audio Package

